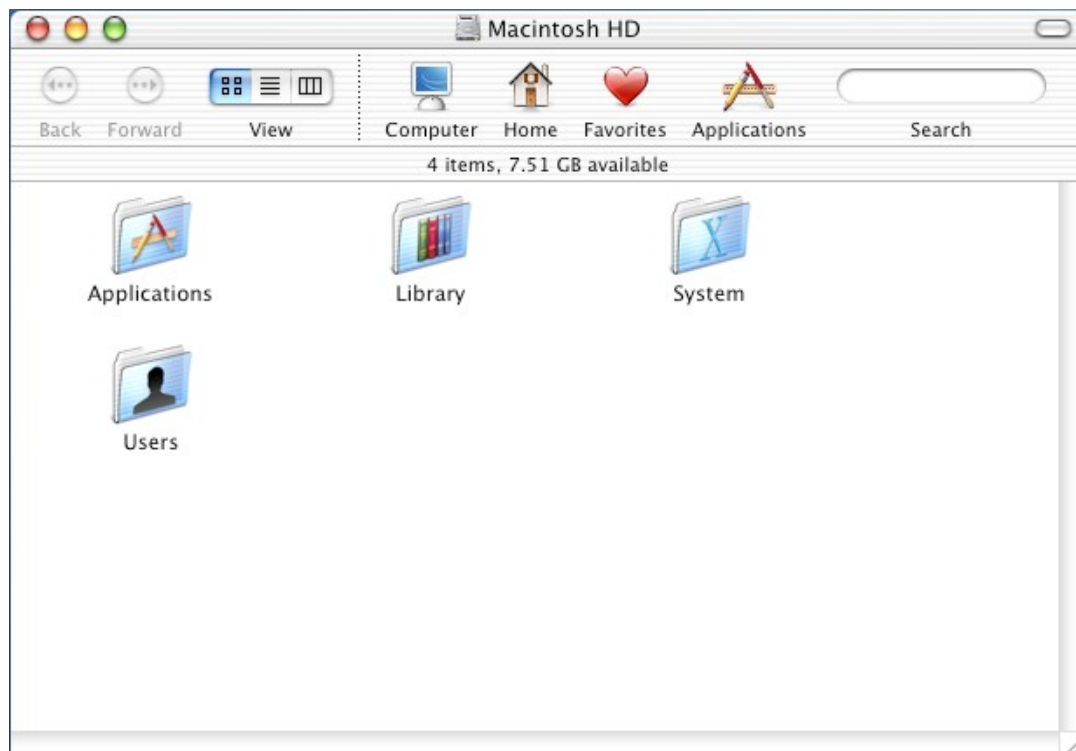
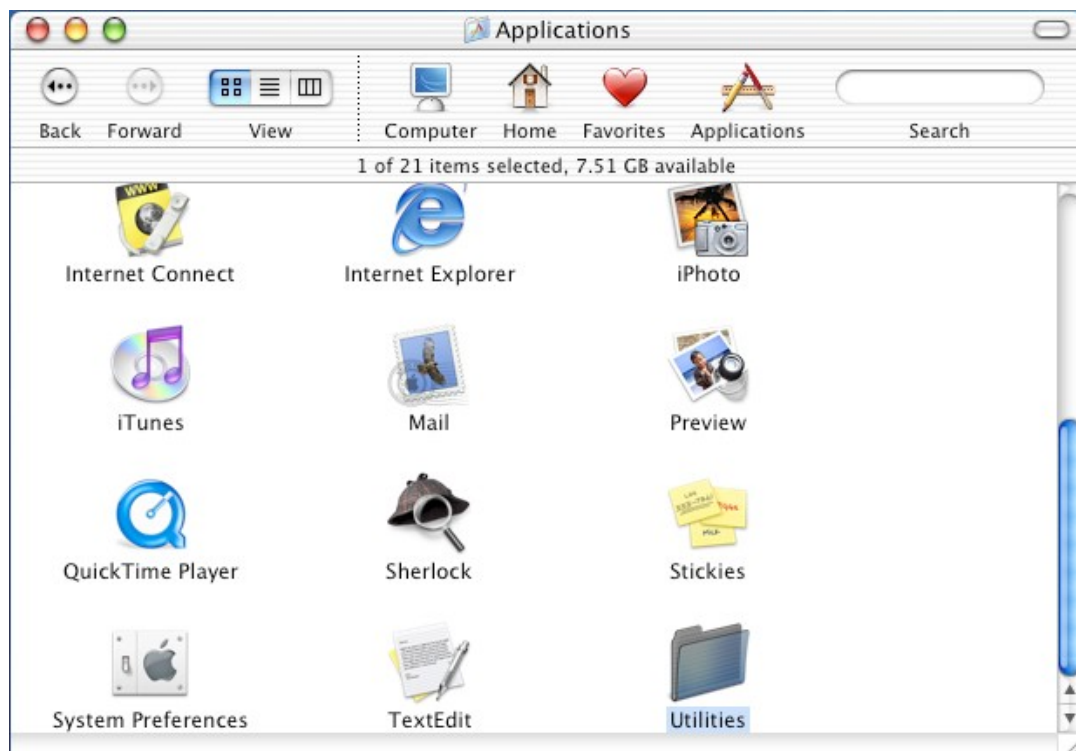


Printer Configuration of Apple Mac OS X 10.2, 10.3, and 10.4

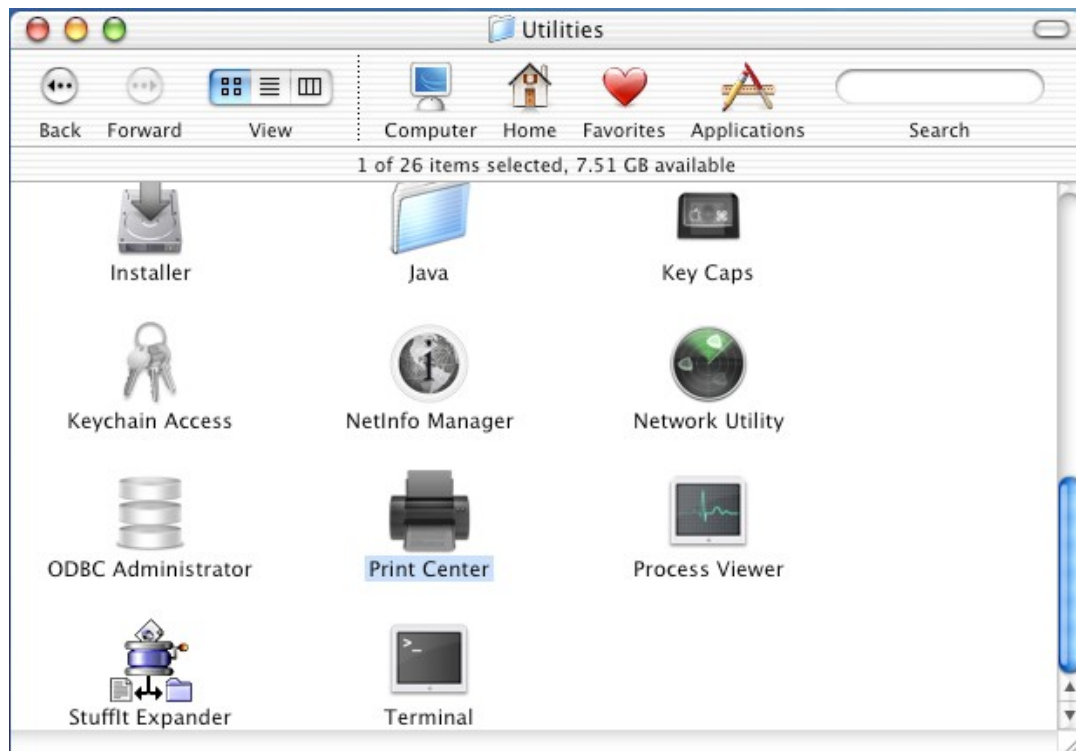
1. Open Macintosh HD on the Desktop, and click “Applications”.



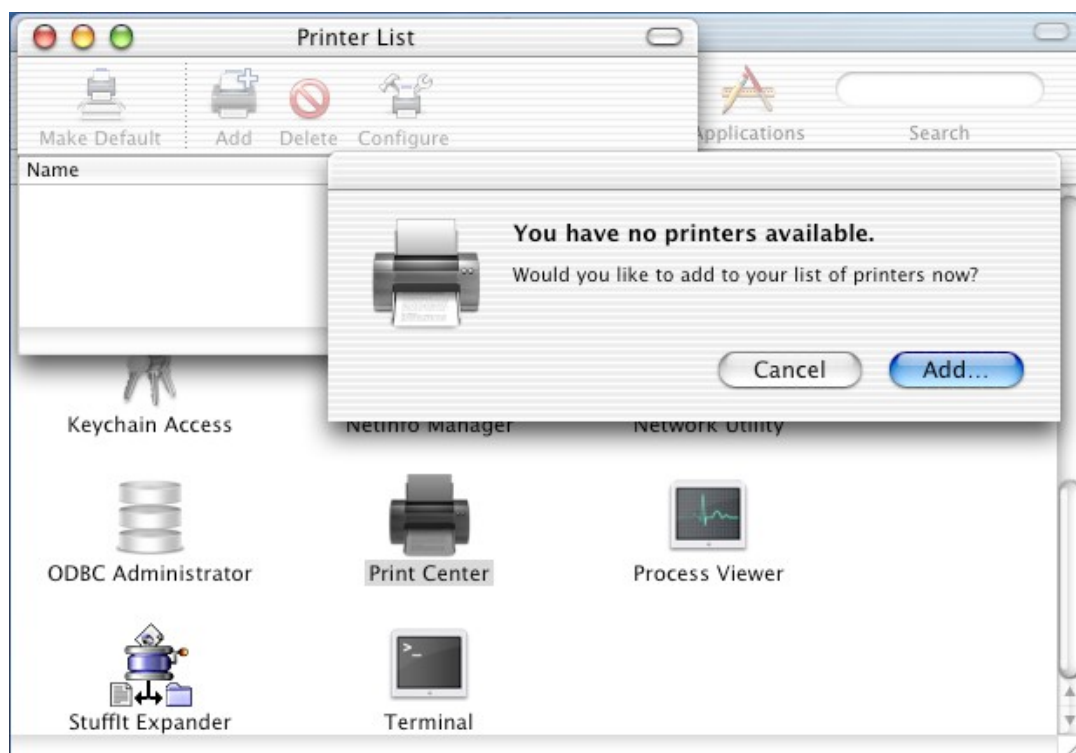
2. Click “Utilities”.



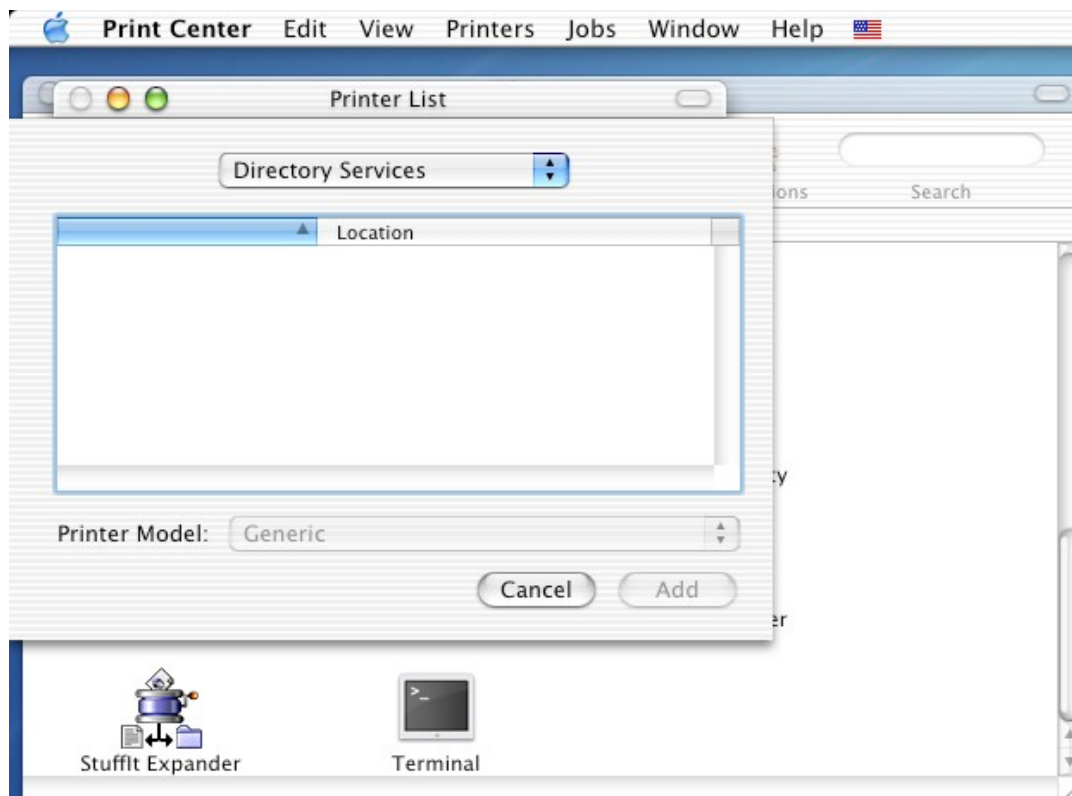
3. Click “Print Center”. In Mac OS X 10.4.x, it is named “Printer Setup Utility”.



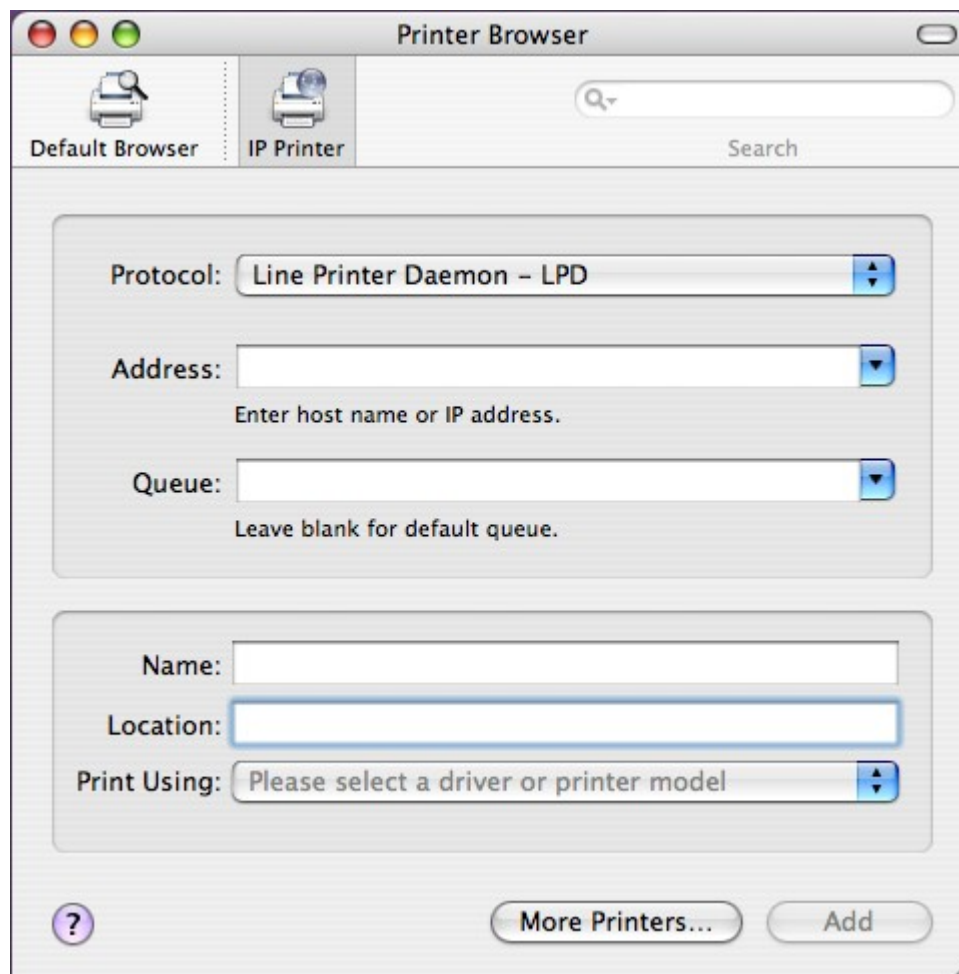
4.Press “Add...”.



5.It shows the dialog box of the printer configuration (Mac OS X 10.2.x/10.3.x).



It shows the dialog box of the printer configuration (Mac OS X 10.4.x).

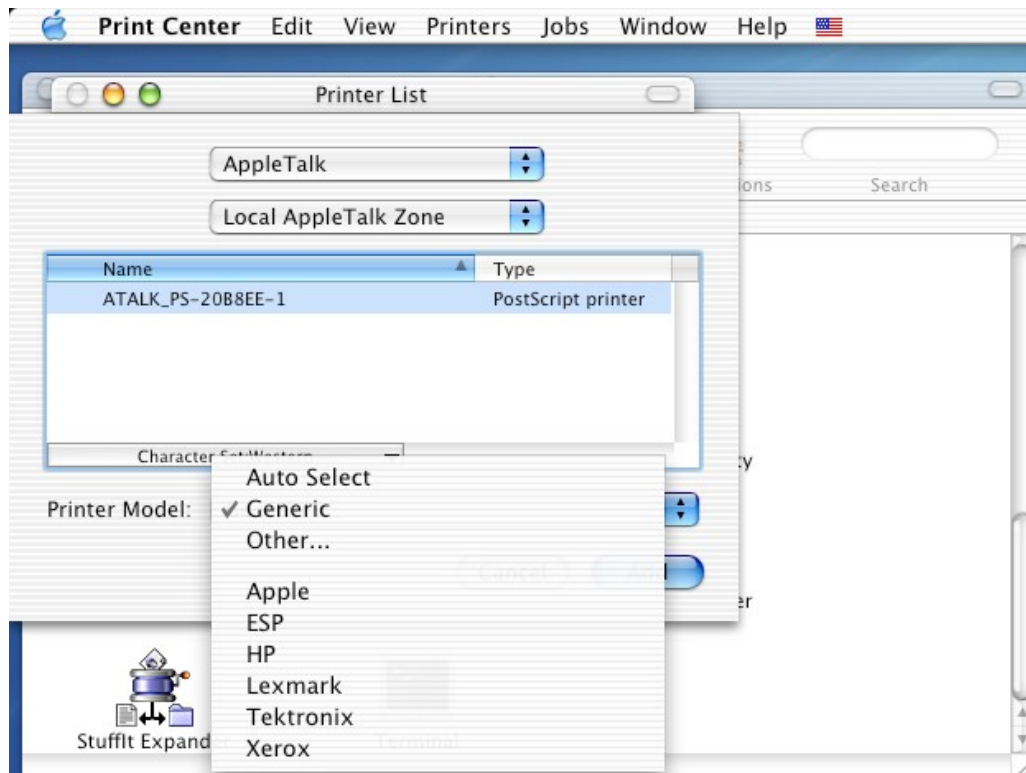


[If you want to use AppleTalk and your printer is a PostScript printer](#)
[If you want to use LPR or your printer isn't a PostScript printer](#)

AppleTalk

1. Mac OS X 10.2.x/10.3.x

Select “AppleTalk” and “Local AppleTalk Zone”. The computer will find the print servers in the local area network. You can select the suitable printer model for your printer, or select “Generic”. **Don't select “Auto Select”!** Press “Add”.



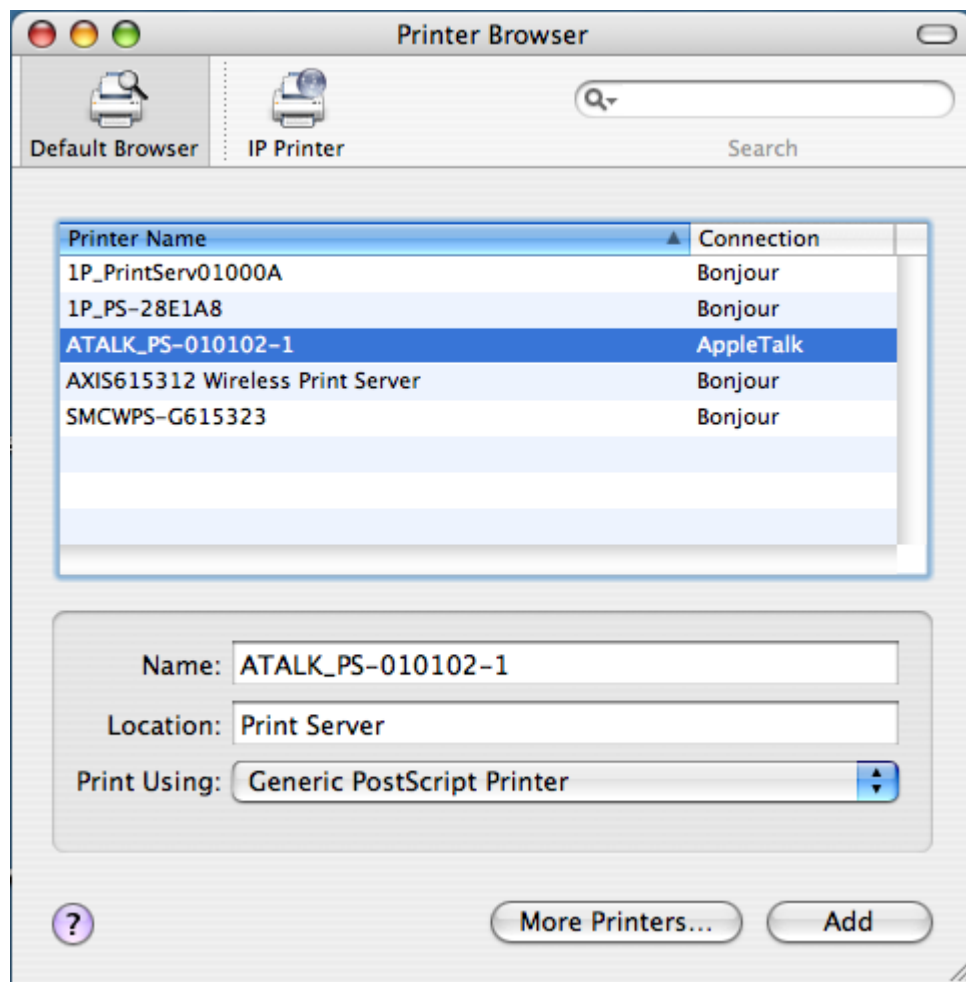
Mac OS X 10.4.x

Click “Default Browser”. The computer will find the print servers in the local area network. Select “AppleTalk”. You can select the suitable printer model for your printer, or select “Generic PostScript Printer”. **Don't select “Auto Select”!** Press “Add”.

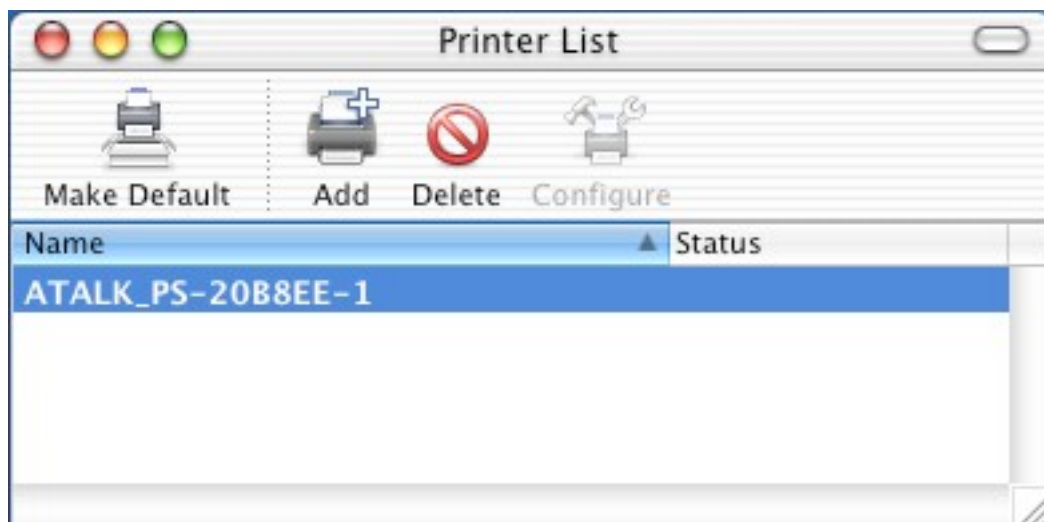
Bonjour, in Mac OS 10.2.x/10.3.x, is named Rendezvous. It is not a new protocol. It is just a solution while there isn't any DHCP servers in your local area network and you don't know how to configure the fixed IP addresses to the print servers and the computers.

Bonjour supports three protocols. LPR, IPP, and RawTCP. If you choose Bonjour, it will automatically chooses one of the three protocols to print. And, you can use the non-PostScript printer driver.

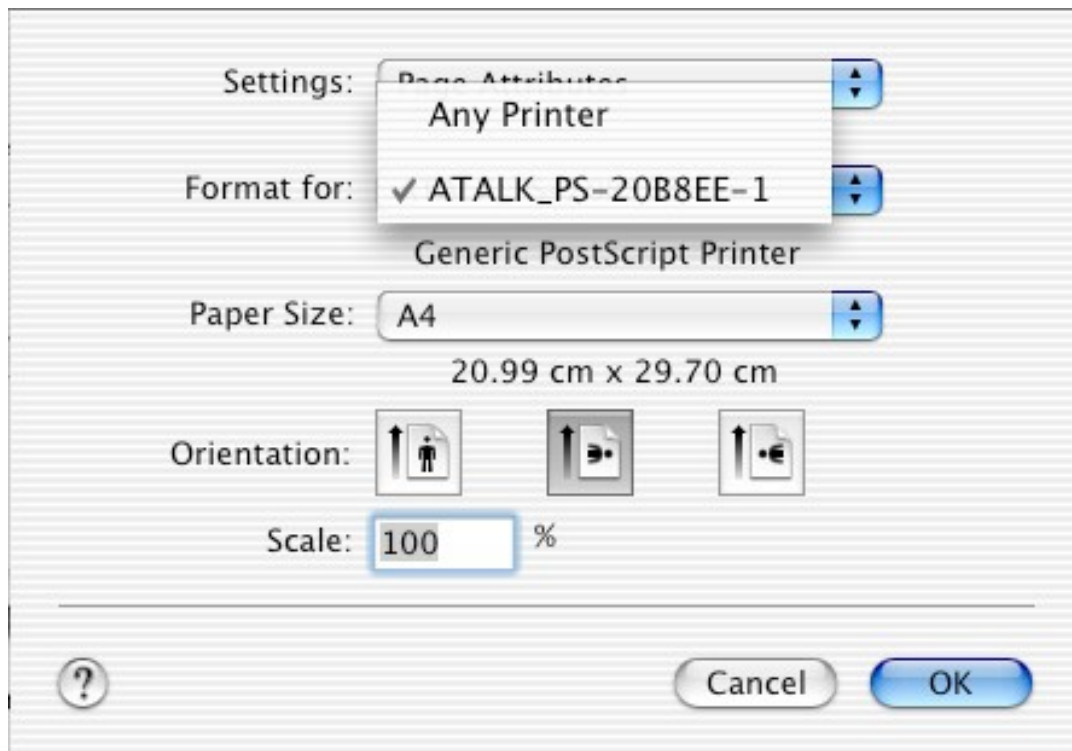
If your print server don't support Bonjour, don't choose this.



2. We have already added a printer.



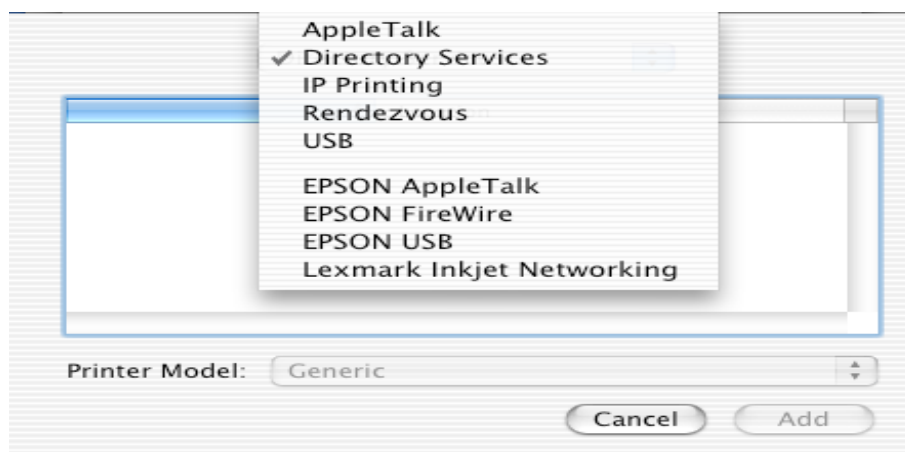
3. Change Format for the printer you just added before printing, and then press "OK".



LPR

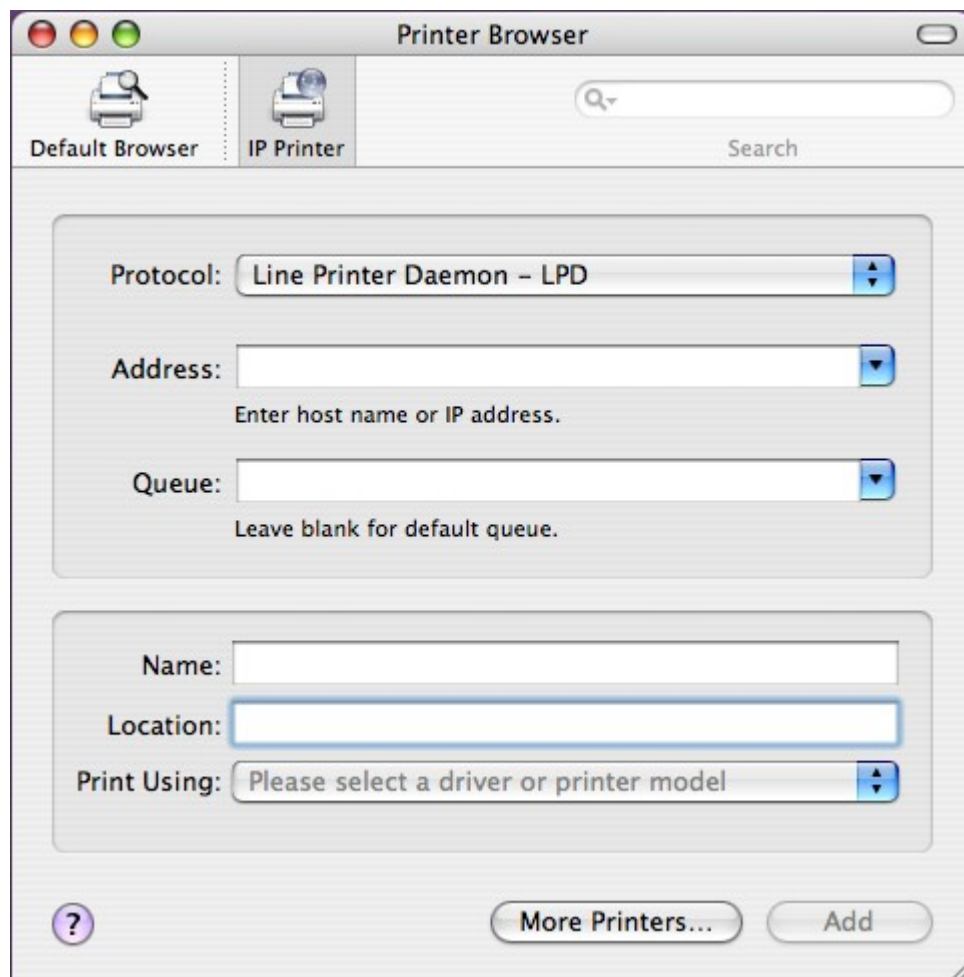
1. Download gimp-print-xxx.ppc.dmg and install this printer driver on your Apple Mac OS X.
(ps: xxx is its version.)
2. Download espgs-xxx.ppc.dmg and install this printer driver on your Apple Mac OS X.
(ps: xxx is its version.)
3. Download hpijs-foomatic-xxx.ppc.dmg and install this printer driver on your Apple Mac OS X.
(ps: xxx is its version.)
4. Download gutenprint-xxx.dmg and install this printer driver on your Apple Mac OS X.
(ps: xxx is its version. Gutenprint is the new name for Gimp-Print as of the 5.0 release.)
5. Mac OS X 10.2.x/10.3.x

Select "IP Printing".



Mac OS X 10.4.x

Click “IP Printer” and select “Line Printer Daemon-LPD”.



6. Mac OS X 10.2.x/10.3.x

Printer's Address: Input the IP address of your print server.
(For example: 192.168.1.200)

Disable “Use default queue on server”.

Queue Name: lp1, lp2, or lp3 (**fixed**)

If your print server is the 1-Port print server, its print port is the first.

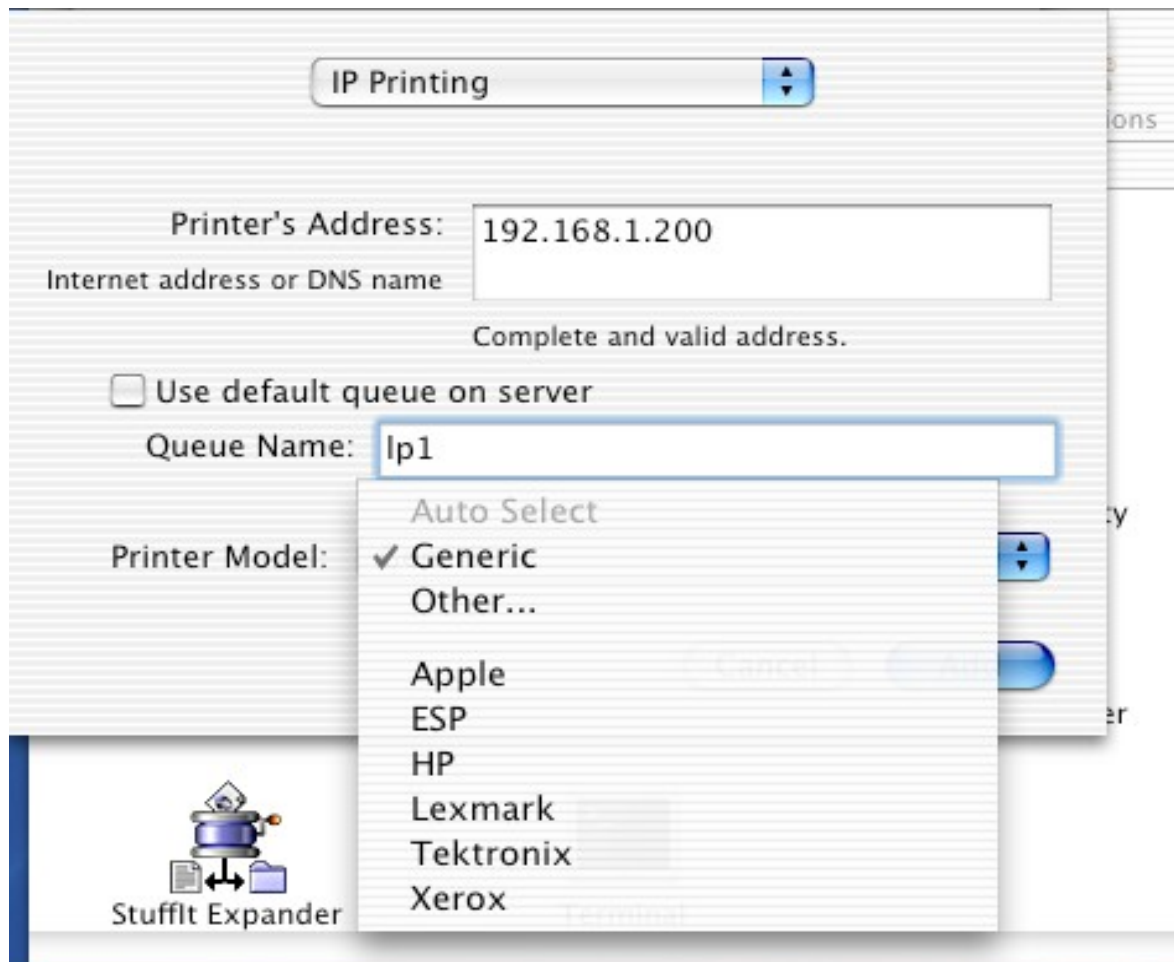
If your print server is not the 1-Port print server, for example, it is the 2 USB and 1 parallel port print server, then, the parallel port is the first. USB 1 is the second. And, USB 2 is the third.

lp1 if your printer is connected with the first print port.

lp2 if your printer is connected with the second print port.

lp3 if your printer is connected with the third print port.

Select the suitable printer model for your printer. If it is a PostScript printer but you don't know its model, please select “Generic”.



Mac OS X 10.4.x

Address: Input the IP address of your print server.

(For example: 192.168.1.200)

Queue: lp1, lp2, or lp3 (**fixed**)

If your print server is the 1-Port print server, its print port is the first.

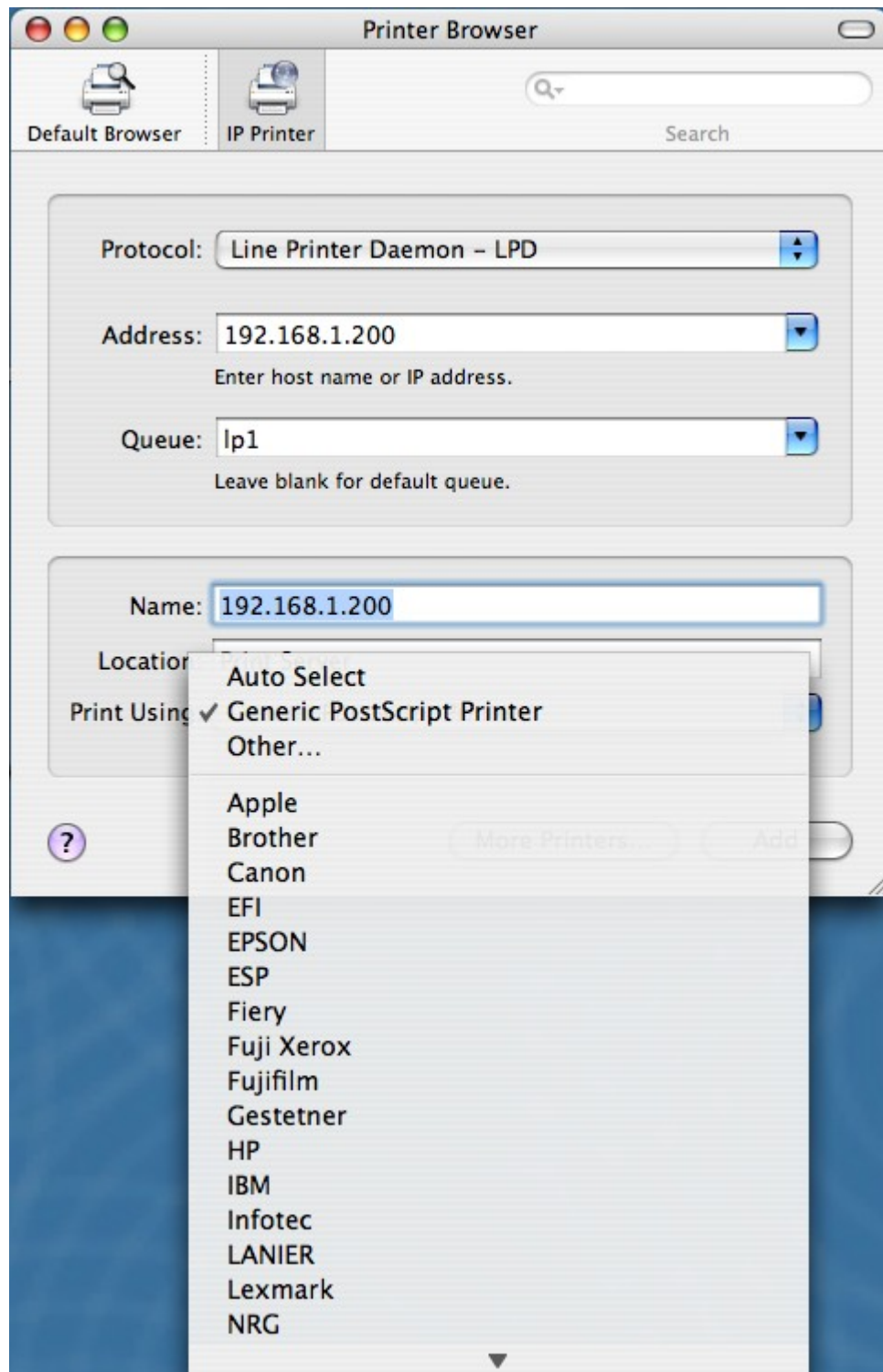
If your print server is not the 1-Port print server, for example, it is the 2 USB and 1 parallel port print server, then, the parallel port is the first. USB 1 is the second. And, USB 2 is the third.

lp1 if your printer is connected with the first print port.

lp2 if your printer is connected with the second print port.

lp3 if your printer is connected with the third print port.

Select the suitable printer model for your printer. If it is a PostScript printer but you don't know its model, please select "Generic".



7. Mac OS X 10.2.x/10.3.x

If your printer is not a PostScript printer, please select the right manufacturer and model name. **Don't choose "Generic"**. And then press "Add".

The screenshot shows the 'Add Printer' dialog box in Mac OS X 10.4.x, with the 'IP Printing' tab selected. The 'Printer's Address' field contains '192.168.1.200' and is labeled 'Internet address or DNS name'. Below it, a note says 'Complete and valid address.' There is an unchecked checkbox for 'Use default queue on server'. The 'Queue Name' field contains 'lp1'. The 'Printer Model' dropdown is set to 'HP'. An expanded list shows several HP DeskJet models with their respective drivers: 'HP DeskJet 1120C, Foomatic + hpijs', 'HP DeskJet 1125C, Foomatic + hpijs' (which is highlighted), 'HP DeskJet 1200C, CUPS+Gimp-Print v4.2.5', and 'HP DeskJet 1200C, Foomatic + hpijs'. At the bottom are 'Cancel' and 'Add' buttons.

IP Printing

Printer's Address: 192.168.1.200
Internet address or DNS name

Complete and valid address.

☐ Use default queue on server

Queue Name: lp1

Printer Model: HP

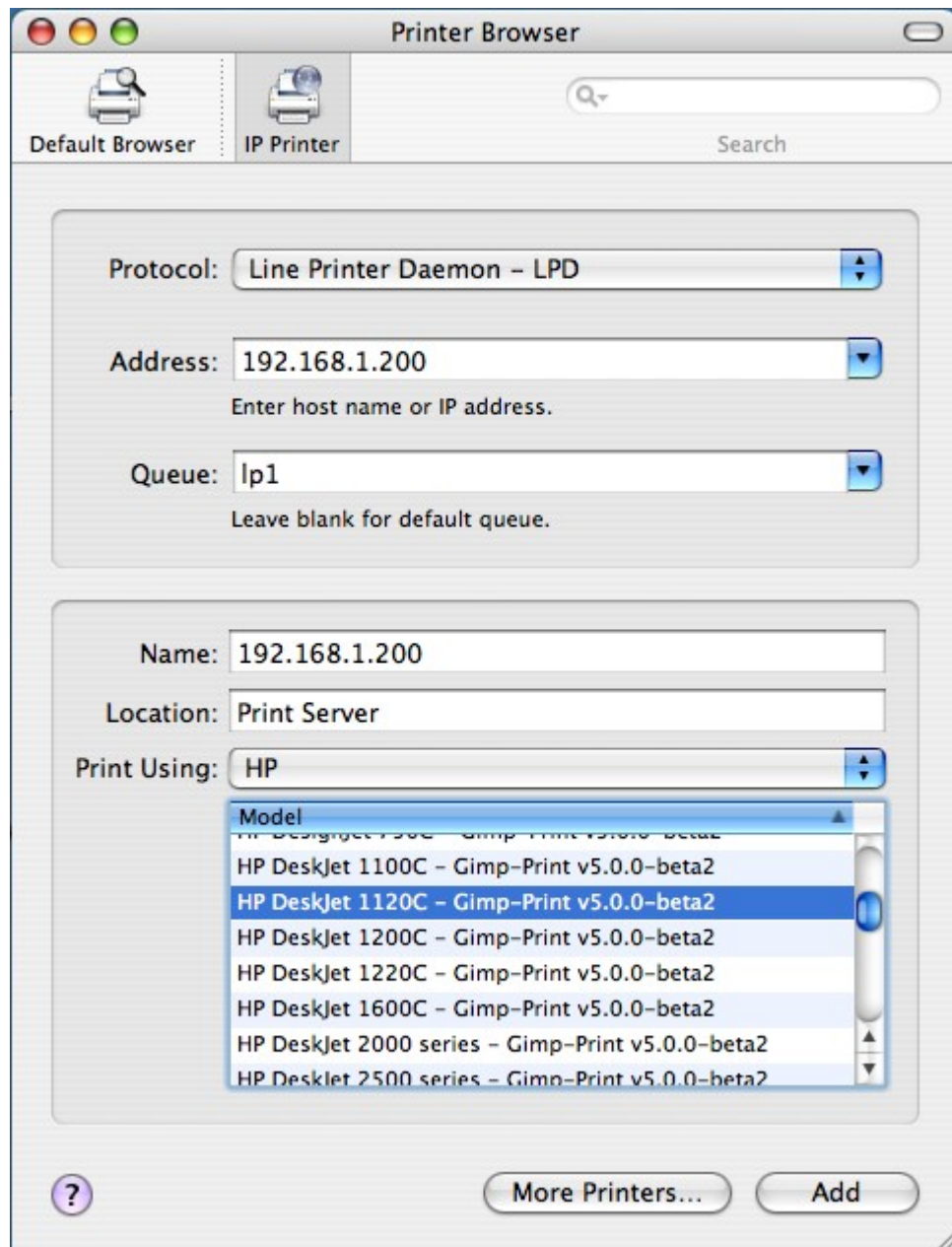
Model Name

- HP DeskJet 1120C, Foomatic + hpijs
- HP DeskJet 1125C, Foomatic + hpijs
- HP DeskJet 1200C, CUPS+Gimp-Print v4.2.5
- HP DeskJet 1200C, Foomatic + hpijs

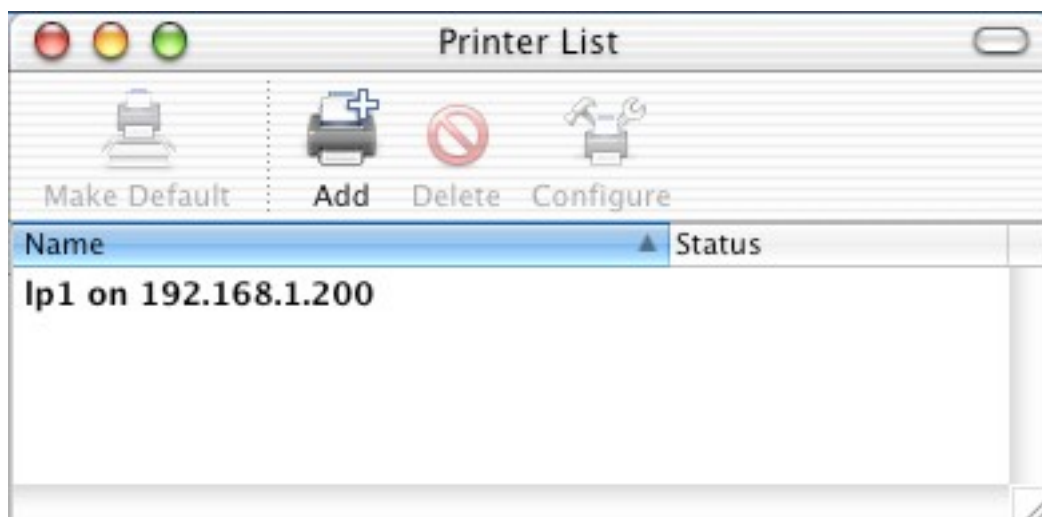
Cancel Add

Mac OS X 10.4.x

If your printer is not a PostScript printer, please select the right manufacturer and model name. **Don't choose "Generic"**. And then press "Add".



8. We have already add a printer.



9.Change Format for the printer you just added before printing, it will display the model of your printer. And then press “OK”.

