

## Ansel 2303 – Installation Instructions

### Antenna Components Included:

- (1) Antenna Feedhorn Assembly
- (1) Feed Reflector
- (1) #6 x 1/2" Screw
- (2) Grid section halves
- (2) Stainless Steel U-Bolts
- (2) Mast Clamps
- (1) Aluminum "L" Bracket
- (4) Lock Nuts
- (4) #8-32 Machine Screws
- (8) #1/4 x 20 Hex Nut
- (8) Lock Washer
- (4) Carriage Bolt
- (1) Flat Washer

### Antenna Assembly:

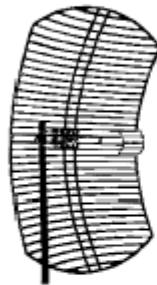
Assemble the two halves of the Reflector Grid using (4) #8-32 machine screws as shown.



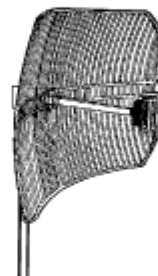
Install the Feed Reflector to the front of the Feedhorn using the #6 x 1/2" screw.



Determine the polarity which will be chosen for the antenna installation. The antenna can be installed either vertically or horizontally polarized. The two polarities are illustrated below:



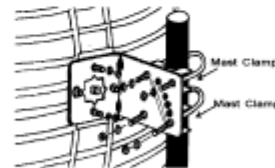
Horizontal Polarity



Vertical Polarity

Place the "L" bracket on the back of the grid assembly as shown, noting the orientation required for the desired polarity.

Attach the Feedhorn to the Grid Assembly using (2) carriage bolts, (2) lockwashers and (2) hex nuts.



Install the (2) mast clamps on the U-Bolts as shown and fasten to the "L" bracket using (4) lock washers and (4) 1/4 x 20 nuts. One of the U-Bolts may optionally be installed in the tilt slot rather than the fixed holes to allow for antenna tilting. In that case the flat washer is used to secure the antenna at the required elevation angle.

