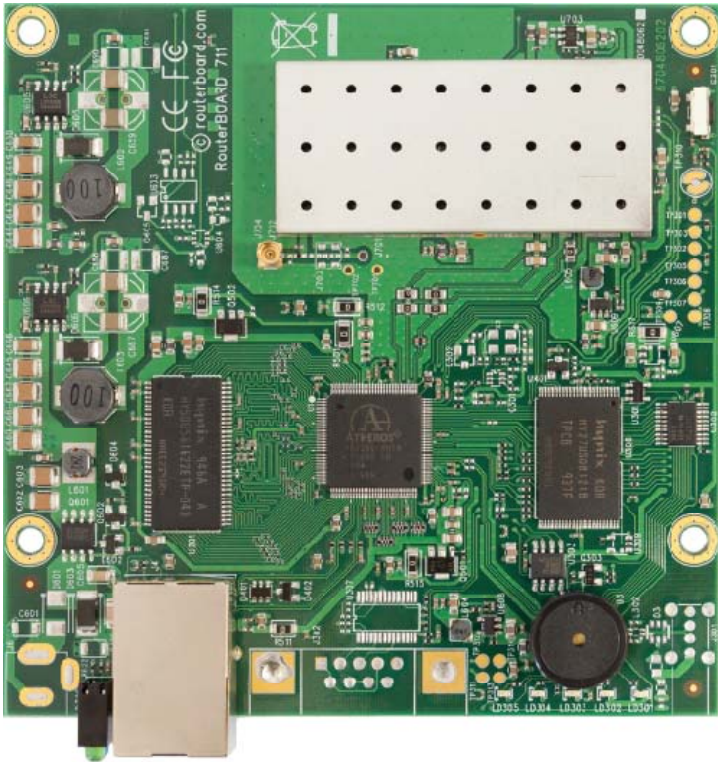


RouterBOARD 711-5Hn

Perfect for building CPE devices



The RB711 is a small CPE type RouterBOARD wireless router with an integrated 5GHz 802.11a/n wireless card. RB711 includes RouterOS - the operating system, which can be a router, firewall, bandwidth manager, a CPE and more - all at the same time.

This device is available either with a u.FL connector or a MMCX connector (models RB711-5Hn-MMCX and RB711-5Hn-uFL).

The integrated wireless card is capable of up to 23dBm transmit power output. Built in 10kV ESD protection on RF port.

| | |
|-------------------|--|
| CPU | Atheros AR7240 400MHz network processor |
| Memory | 32MB DDR SDRAM onboard memory |
| Boot loader | RouterBOOT |
| Data storage | 64MB onboard NAND memory chip |
| Ethernet | One 10/100 Mbit/s Fast Ethernet port with Auto-MDI/X |
| miniPCI | none |
| Wireless | Built in 5GHz AR9280 802.11a/n card, 1 MMCX/uFL connector (depends on model) |
| Extras | Reset switch, Beeper |
| Serial port | none |
| LEDs | Power, NAND activity, 5 user LEDs |
| Power options | Power over Ethernet: 10..28V DC (except power over datalines). No power jack |
| Dimensions | 10.5 cm x 10.5 cm (4.13 in x 4.13 in) Weight: 67g |
| Power consumption | Up to 4.5W at 18V full load (0.245A) |
| Operating System | MikroTik RouterOS v4, Level3 license |
| RX sensitivity | 802.11a: -92 dBm @ 6Mbps to -76 dBm @ 54 Mbps 802.11n: -92 dBm @ MCS0 to -73 dBm @ MCS7 |
| TX power | 802.11a: 23dBm @ 6Mbps to 19dBm @ 54 Mbps 802.11n: 22dBm @ MCS0 to 15dBm @ MCS7 |
| Modulations | OFDM: BPSK, QPSK, 16 QAM, 64QAM DSSS: DBPSK, DQPSK, CCK |